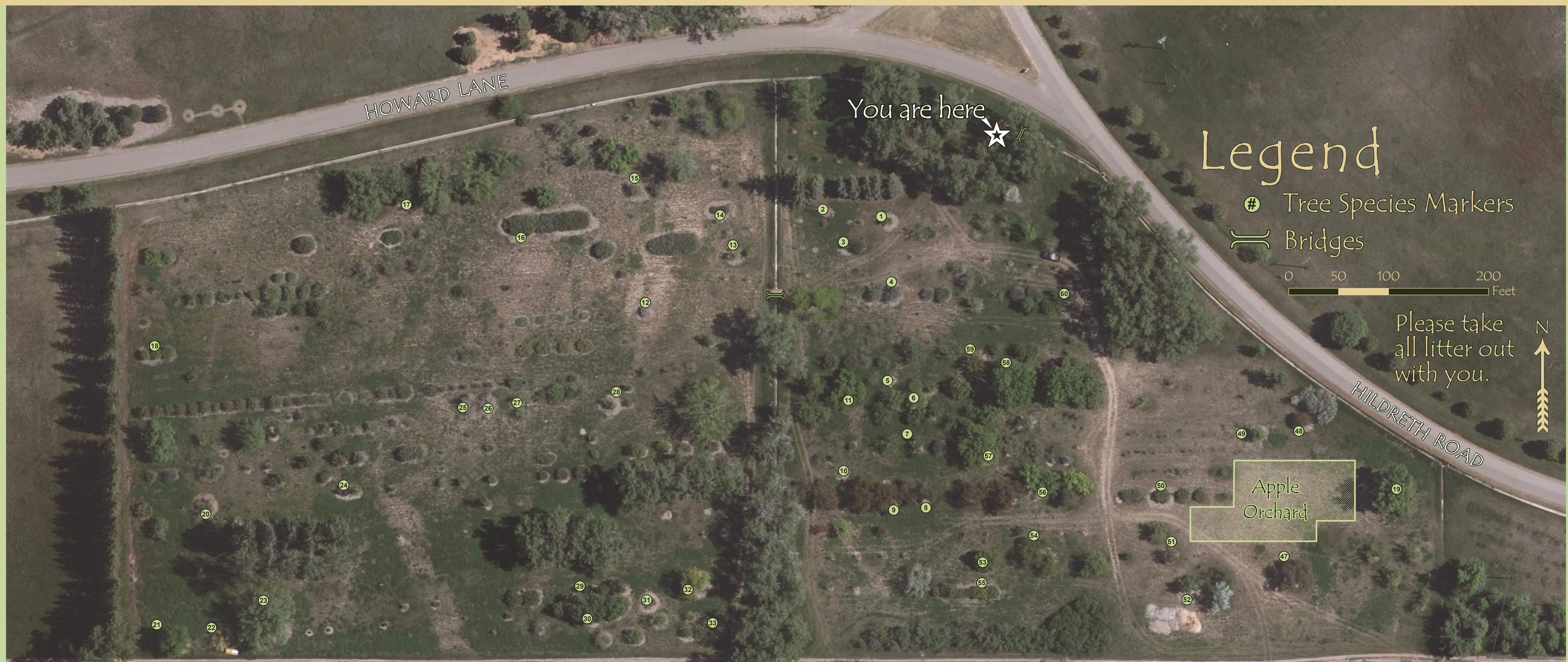


High Plains Arboretum Guide



Species Key

- | | | |
|-----------------------------------|-----------|---|
| 1. Dodd's Hawthorn | - - - - - | Crataegus doddii |
| 2. Kentucky Coffeetree | - - - - - | Gymnocladus dioica |
| 3. Cheyenne Privet | - - - - - | Ligustrum vulgare 'Cheyenne' |
| 4. Blue Velvet Honeysuckle | - - - - - | Lonicera korolkowi var. floribunda |
| 5. Threeleaf Sumac | - - - - - | Rhus trilobata |
| 6. Hawthorn sp. 'Lauta' | - - - - - | Crataegus lauta |
| 7. European Buckthorn | - - - - - | Rhamnus cathartica |
| 8. Athabasca Crabapple | - - - - - | Malus 'Athabasca' |
| 9. Chilco Crabapple | - - - - - | Malus 'Chilco' |
| 10. Forever Gold Potentilla | - - - - - | Potentilla fruticosa var. 'purdomii' |
| 11. Biltmore Ash | - - - - - | Fraxinus biltmoreana |
| 12. Apache Plume | - - - - - | Fallugia paradoxa |
| 13. Amur Maple | - - - - - | Acer ginnala |
| 14. Dwarf Russian Almond | - - - - - | Prunus tenella |
| 15. Russian Hawthorn | - - - - - | Crataegus ambigua |
| 16. Cheyenne Early Lilac | - - - - - | Syringa oblata |
| 17. Horse Chestnut | - - - - - | Aesculus hippocastanum |
| 18. Cheyenne Mockorange | - - - - - | Philadelphus lewisii 'Cheyenne' |
| 19. Green Ash | - - - - - | Fraxinus lanceolata pennsylvanica |
| 20. Wavyleaf Oak | - - - - - | Quercus undulata |
| 21. American Linden | - - - - - | Tilia americana |
| 22. Tidy caragana | - - - - - | Caragana microphylla 'Tidy' |
| 23. Encampment Willow | - - - - - | Salix alba 'Encampment' |
| 24. Japanese Tree Lilac | - - - - - | Syringa reticulata |
| 25. White mulberry | - - - - - | Morus alba |
| 26. Red mulberry | - - - - - | Morus rubra |
| 27. Pink Lady Euonymus | - - - - - | Euonymus bungeanus 'Pink Lady' |
| 28. European Birdcherry | - - - - - | Prunus padus |
| 29. Sutherland Caragana | - - - - - | Caragana arborescens pyramidalis 'Sutherland' |
| 30. Yellow Buckeye | - - - - - | Aesculus octandra |
| 31. Maximowicz Peashrub | - - - - - | Caragana maximowicziana |
| 32. Northern Red Oak | - - - - - | Quercus rubra (historically known as Q. borealis) |
| 33. Hoptree | - - - - - | Ptelea isophylla 'pubescens' |
| 34. Downy Hawthorn | - - - - - | Crataegus mollis |
| 35. Tatarian Maple | - - - - - | Acer tataricum |
| 36. Hawthorn 'durobrivensis' | - - - - - | Crataegus x durobrivensis |
| 37. Russian Hawthorn | - - - - - | Crataegus ambigua |
| 38. Maximowicz Hawthorn | - - - - - | Crataegus maximowiczii |
| 39. Sungari Rockspray Cotoneaster | - - - - - | Cotoneaster racemiflora soongorica |
| 40. Littleleaf Linden | - - - - - | Tilia cordata |
| 41. Peking Tree Lilac | - - - - - | Syringa pekinensis |
| 42. Dahurian buckthorn | - - - - - | Rhamnus davurica |
| 43. Korean Barberry | - - - - - | Berberis koreana |
| 44. European White Elm (Russian) | - - - - - | Ulmus laevis |
| 45. Texas Buckeye | - - - - - | Aesculus arguta |
| 46. Black Hills Spruce | - - - - - | Picea glauca 'Densata' |
| 47. Rosy Bloom Crabapple | - - - - - | Malus 'Morden' |
| 48. Pink Weeper Crabapple | - - - - - | Malus 'Pink Weeper' |
| 49. Japanese Flowering Crabapple | - - - - - | Malus floribunda |
| 50. Trumpet Gooseberry | - - - - - | Ribes leptanthum |
| 51. Chokecherry | - - - - - | Prunus virginiana |
| 52. Haugmann Crabapple | - - - - - | Malus sylvestris |
| 53. Sino Apricot | - - - - - | Prunus mandshurica 'Sino' |
| 54. Hulan Apricot | - - - - - | Prunus mandshurica 'Hulan' |
| 55. Manchurian viburnum | - - - - - | Viburnum burckiaeticum |
| 56. Ussurian Pear | - - - - - | Pyrus ussuriensis |
| 57. Hung Hai Tung Crabapple | - - - - - | Malus asiaticus |
| 58. Bur Oak | - - - - - | Quercus macrocarpa |
| 59. New Mexican Privet | - - - - - | Foresteria neo-mexicana |
| 60. Oakleaf mountainash | - - - - - | Sorbus x hybrida |



This Map is a GIS Product
Published by the City Engineer's Office
Aerial Photo as of June, 2014
Map produced August, 2016

